

The Lenovo logo is displayed in white text on a black rectangular background.

# Using Read Intensive SSDs with Lenovo Storage V Series and IBM Storwize for Lenovo

---

**Introduces Read Intensive SSD  
Identification on Lenovo Storage  
V-series product family**

---

**Highlights the tips on configuring  
RAID for RI SSDs**

---

**Covers Read Intensive SSD  
Considerations**

---

**Describes drive endurance impacts  
of system resources utilizing RI SSD**



# Abstract

This paper describes the configuration guidelines for using Read Intensive Flash Drives available from Lenovo with the Lenovo Storage V Series and IBM Storwize for Lenovo family systems. Read Intensive drives are those that have an endurance value of less than 1 drive write per day (1 DWPD).

This paper describes the configuration guidelines for using Read Intensive Flash Drives available from Lenovo with the Lenovo Storage V-series and IBM Storwize for Lenovo family storage systems.

At Lenovo Press, we bring together experts to produce technical publications around topics of importance to you, providing information and best practices for using Lenovo products and solutions to solve IT challenges.

See a list of our most recent publications at the Lenovo Press web site:

<http://lenovopress.com>

**Do you have the latest version?** We update our papers from time to time, so check whether you have the latest version of this document by clicking the **Check for Updates** button on the front page of the PDF. Pressing this button will take you to a web page that will tell you if you are reading the latest version of the document and give you a link to the latest if needed. While you're there, you can also sign up to get notified via email whenever we make an update.

# Contents

Drive identification . . . . .	3
RAID considerations . . . . .	5
Read Intensive SSD considerations. . . . .	7
System resource use impact on endurance. . . . .	8
Notices . . . . .	9
Trademarks . . . . .	10

# Introduction

This paper describes the configuration guidelines for using Read Intensive Flash Drives available from Lenovo with the Lenovo Storage V Series and IBM Storwize for Lenovo family systems.

The Read Intensive (RI) solid state drives (SSDs) that are available on IBM Storwize V7000 for Lenovo, Lenovo Storage V5030, Lenovo Storage V3700 V2 and Lenovo Storage V3700 V2 XP are one Drive Write Per Day (DWPD) Read Intensive drives.

To deploy Read Intensive SSDs, your system must have Lenovo Storage V series or IBM Storwize for Lenovo code levels 7.6.1.4 or 7.7.0 installed.

RI SSDs are available to purchase as an add-on to an existing Lenovo Storage V series or IBM Storwize for Lenovo system, or they can be bought with a new system that contains RI SSDs. Due to the Read Intensive nature of these drives, they must be treated differently from regular or 10 DWPD SSD drives. We advise that the user follow the configuration guidelines that are detailed in the following document to be able to make the best use of RI SSDs.

## Drive identification

RI SSDs on a system can be identified by searching for the vendor\_id assigned to these drives. Depending on the product model, the RI SSD will use one of the following vendor\_ids:

- ▶ IBM Storwize V7000 for Lenovo : **IBM-D051**
- ▶ Lenovo Storage V5030 : **IBM-E051**
- ▶ Lenovo Storage V3700 V2 : **IBM-E051**
- ▶ Lenovo Storage V3700 V2 XP : **IBM-E051**

For example, on an IBM Storwize V7000 for Lenovo system, the RI SSD drives can be identified by using the `lsdrive` command, as shown in Example 1.

*Example 1 The lsdrive command*

---

```
IBM_Storwize:cluster_name:admin>lsdrive -gui |grep -i d051
15 onlinecandidate 50000396ec8bbb91 sas_hdd1.7TB512IBM-D051 PX04SRB19201EJ595
11S00VN228YXXXSVQARGWJ 10000 540D27onlineonlineno12Gbinactive 129
23 onlinecandidate 50000396ec8bbe5 sas_hdd1.7TB512IBM-D051 PX04SRB19201EJ595
11S00VN228YXXXSVQARGZ6 10000 540D26onlineonlineno12Gbinactive 129
```

---

Using the IBM Storwize for Lenovo graphical user interface (GUI), you can also view the RI SSD pools by navigating to **Pools** → **Internal Storage**, as shown in Figure 1.

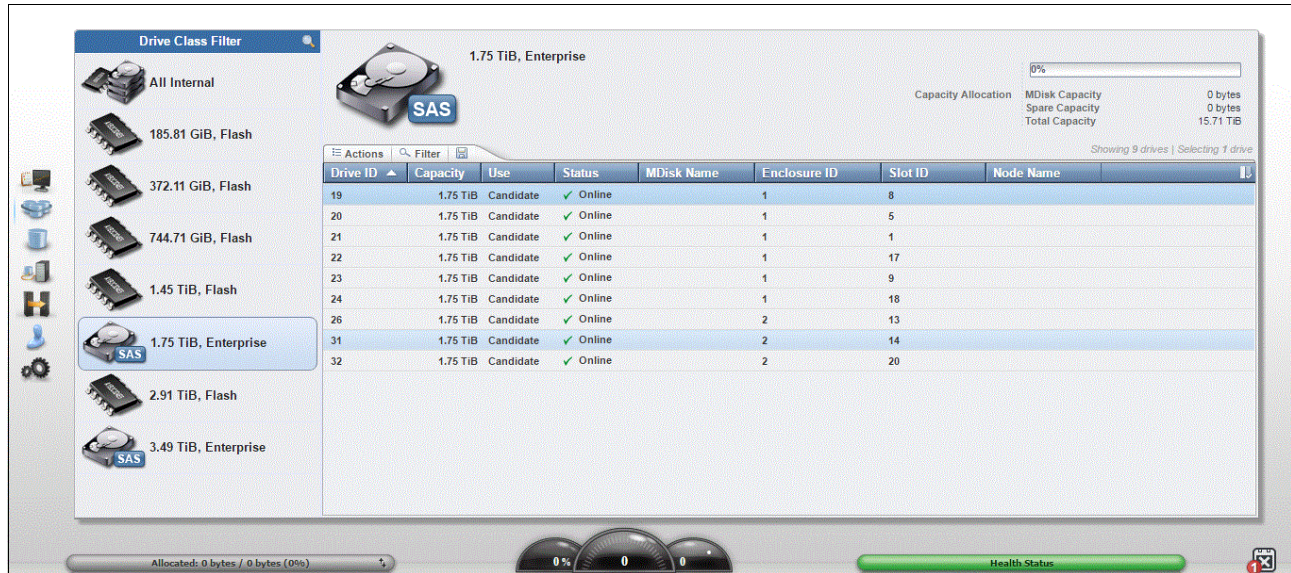


Figure 1 RI SSD pools

Note that RI SSDs will have the following attributes when listed by using `lsdrive <drive_id>` or `lsdrive -gui` or in the Properties view using the GUI, as shown in Example 2.

*Example 2 RI SSD attributes*

```
product_id: PX04SRB192
vendor_id: IBM-D051/IBM-E051/IBM-C051 (depending on Storwize product)
tech_type: sas_hdd
RPM: 10000
FRU_part_number: 01EJ601
```

For example, a 2 terabyte (TB) RI SSD on an IBM Storwize V7000 for Lenovo system will display the information shown in Example 3.

*Example 3 The lsdrive <drive\_id> command*

```
IBM_Storwize:cluster_name:admin>lsdrive 99
id 99
status online
error_sequence_number
use candidate
UID 50000396ec8bbbbd
tech_type sas_hdd
capacity 1.7TB
block_size 512
vendor_id IBM-D051
product_id PX04SRB192
FRU_part_number 01EJ595
FRU_identity 11S00VN228YXXSVQARGXW
RPM 10000
firmware_level 540D
FPGA_level
mdisk_id
```

```
mdisk_name
member_id
enclosure_id 6
slot_id 24
node_id
node_name
quorum_id
port_1_status online
port_2_status online
interface_speed 12Gb
protection_enabled yes
auto_manage inactive
drive_class_id 129
```

---

Figure 2 shows the display that uses the GUI Properties view for the drive, and the Vendor ID indicates an RI SSD.

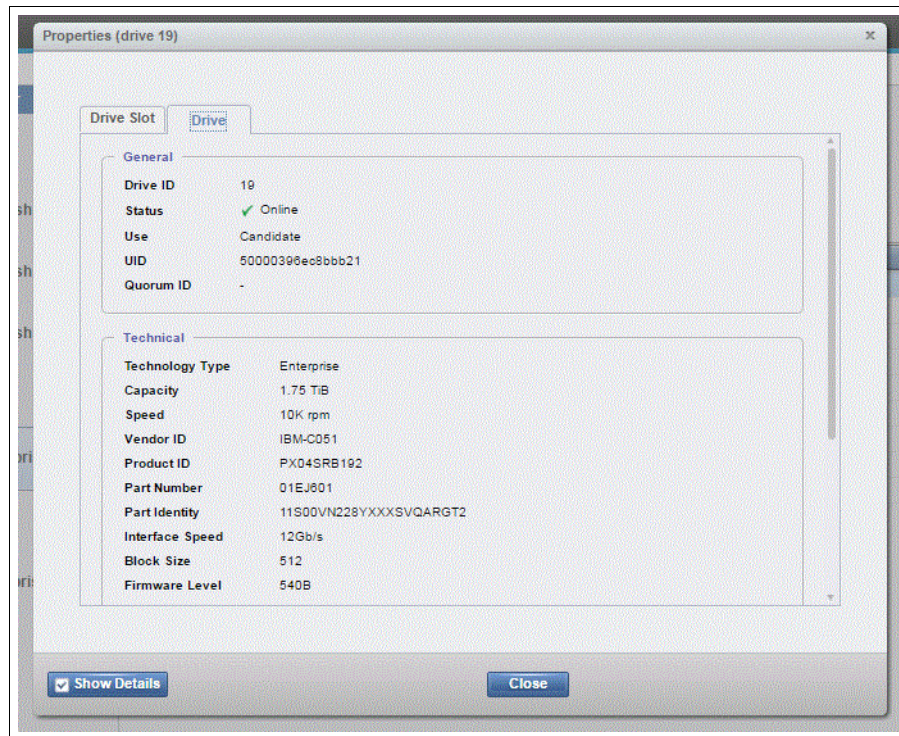


Figure 2 Vendor ID indicates RI SSD

## RAID considerations

In the current (at the time of writing) release of Lenovo Storage V series or IBM Storwize for Lenovo code (version 7.7.0/7.6.1.4), RI SSDs are assigned a tech\_type of sas\_hdd at 10,000 revolutions per minute (RPM). Due to this fact and the limitations on the write capability of these SSDs, the following leading practices apply when you create Redundant Array of Independent Disks (RAID) configurations:

- It is required that Read Intensive SSDs RAID and managed disk (MDisk) pools are created manually.

- ▶ If you are configuring a new system, create RI SSD RAIDs and pools before you configure other drives (other SSDs, Enterprise and Nearline serial-attached SCSI (SAS) drives).
- ▶ If you are adding RI SSDs into an existing system, create RAID and storage pools manually. Do not mix RI SSD and any other drive type in the same pool.
- ▶ Given that RI SSDs are assigned a tech\_type of sas\_hdd and 10,000 RPM, it is possible that automatic configuration tools might mix these SSDs with other 10,000 RPM hard disk drives (HDDs). This can affect RI SSD array performance. It is strongly advised that automatic storage configuration tools are *not* used for these SSDs.

It is imperative that enough spare RI SSDs are made available for RI SSD arrays. If a drive in an RI SSD array fails and a matching RI SSD is not available as a spare, the system picks up a HDD of matching or higher capacity and incorporates it into the RI SSD array. This impairs the performance of the entire RI SSD array. It is essential that sufficient spare RI SSDs are available to maintain exclusivity of RI SSD arrays.

Figure 3 and Figure 4 illustrate leaving sufficient null members of spares for RI arrays.

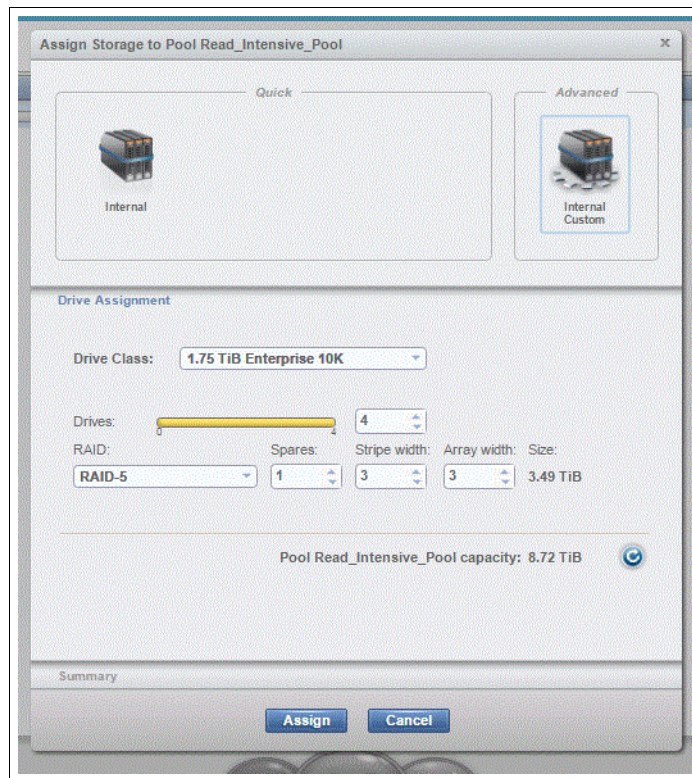


Figure 3 Spares



Figure 4 Spares (2)

It is necessary to ensure that RAID arrays formed of HDDs are assigned enough spare HDDs. In the absence of this configuration, an RI SSD could get incorporated into an HDD RAID array, severely under-utilizing the RI SSD.

RI SSD MDisks should not be mixed with other HDD MDisks in the same pool. If incorporated into a hybrid pool, IBM Easy Tier management could subject the RI SSDs to unsustainable workloads.

## Read Intensive SSD considerations

RI drives have sufficient endurance to permit an average of one DWPD, and clients should choose applications for RI SSDs that have a greater read versus write workload.

When an RI SSD is used up to 95% of its endurance, an alert is logged in the system event log. If the SSD is a redundant drive in a RAID array, it will be taken offline. If it is non-redundant (taking this SSD offline will result in an array going offline), the SSD continues to be available. It is advised that you arrange a replacement as soon as possible after receiving this alert.

The eventlog entry has an event ID of 010073 and a description of Drive reporting PFA Errors, as shown in Example 4 and Figure 5 on page 8.

*Example 4 PFA errors (lines removed for brevity)*

---

```

IBM_Storwize:cluster_name:admin>lseventlog 161
sequence_number 161
notification_type error
event_id 010073
event_id_text Drive reporting PFA Errors
error_code 1680
error_code_text Drive fault type 1

```

---

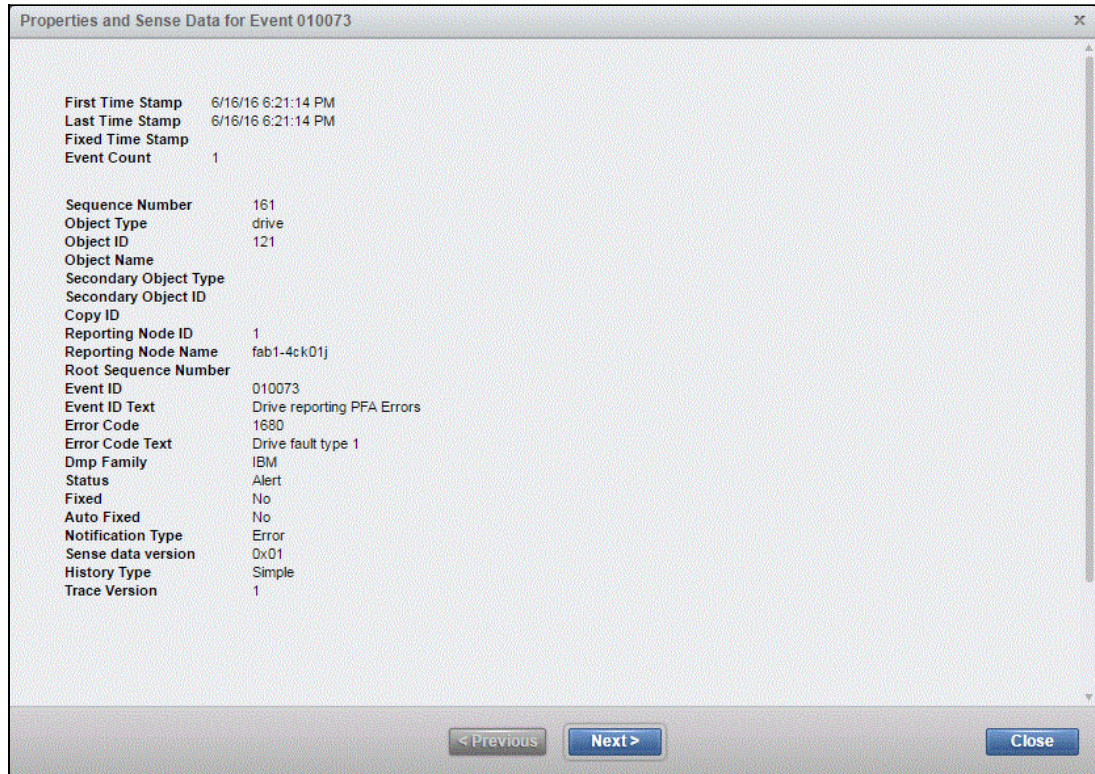


Figure 5 PFA errors

## System resource use impact on endurance

Keep in mind that there will also be some system resources expended using RI SSD. For example, array initialization will write zeros to all drives in the RAID array. If the drives are used as quorum disks, system data is written to a portion of the disks in addition to user data. The impact on endurance from these operations is considered minimal.

When volumes (VDisks) are created, disk space occupied by the VDisks are initialized with zeros. Again, although impact to endurance is minimal, it is advised that you create all volumes by using the `mkvdisk -nofmtdisk` command, as shown in Example 5.

*Example 5 The mkvdisk command*

---

```
IBM_Storwize:cluster_name:admin>mkvdisk -nofmtdisk <other options>
```

---



# Notices

Lenovo may not offer the products, services, or features discussed in this document in all countries. Consult your local Lenovo representative for information on the products and services currently available in your area. Any reference to a Lenovo product, program, or service is not intended to state or imply that only that Lenovo product, program, or service may be used. Any functionally equivalent product, program, or service that does not infringe any Lenovo intellectual property right may be used instead. However, it is the user's responsibility to evaluate and verify the operation of any other product, program, or service.

Lenovo may have patents or pending patent applications covering subject matter described in this document. The furnishing of this document does not give you any license to these patents. You can send license inquiries, in writing, to:

Lenovo (United States), Inc.  
1009 Think Place - Building One  
Morrisville, NC 27560  
U.S.A.  
Attention: Lenovo Director of Licensing

LENOVO PROVIDES THIS PUBLICATION "AS IS" WITHOUT WARRANTY OF ANY KIND, EITHER EXPRESS OR IMPLIED, INCLUDING, BUT NOT LIMITED TO, THE IMPLIED WARRANTIES OF NON-INFRINGEMENT, MERCHANTABILITY OR FITNESS FOR A PARTICULAR PURPOSE. Some jurisdictions do not allow disclaimer of express or implied warranties in certain transactions, therefore, this statement may not apply to you.

This information could include technical inaccuracies or typographical errors. Changes are periodically made to the information herein; these changes will be incorporated in new editions of the publication. Lenovo may make improvements and/or changes in the product(s) and/or the program(s) described in this publication at any time without notice.

The products described in this document are not intended for use in implantation or other life support applications where malfunction may result in injury or death to persons. The information contained in this document does not affect or change Lenovo product specifications or warranties. Nothing in this document shall operate as an express or implied license or indemnity under the intellectual property rights of Lenovo or third parties. All information contained in this document was obtained in specific environments and is presented as an illustration. The result obtained in other operating environments may vary.

Lenovo may use or distribute any of the information you supply in any way it believes appropriate without incurring any obligation to you.

Any references in this publication to non-Lenovo Web sites are provided for convenience only and do not in any manner serve as an endorsement of those Web sites. The materials at those Web sites are not part of the materials for this Lenovo product, and use of those Web sites is at your own risk.

Any performance data contained herein was determined in a controlled environment. Therefore, the result obtained in other operating environments may vary significantly. Some measurements may have been made on development-level systems and there is no guarantee that these measurements will be the same on generally available systems. Furthermore, some measurements may have been estimated through extrapolation. Actual results may vary. Users of this document should verify the applicable data for their specific environment.

This document was created or updated on September 1, 2017.

Send us your comments via the **Rate & Provide Feedback** form found at <http://lenovopress.com/lp0751>

**Note:** This document is based on an IBM Redpaper publication and that the content was used with permission.

## Trademarks

Lenovo, the Lenovo logo, and For Those Who Do are trademarks or registered trademarks of Lenovo in the United States, other countries, or both. These and other Lenovo trademarked terms are marked on their first occurrence in this information with the appropriate symbol (® or ™), indicating US registered or common law trademarks owned by Lenovo at the time this information was published. Such trademarks may also be registered or common law trademarks in other countries. A current list of Lenovo trademarks is available on the Web at <http://www.lenovo.com/legal/copytrade.html>.

The following terms are trademarks of Lenovo in the United States, other countries, or both:

Lenovo(logo)®

Lenovo®

The following terms are trademarks of other companies:

Other company, product, or service names may be trademarks or service marks of others.